



## ED/GED SERIES Installation, Lubrication and Maintenance Instructions

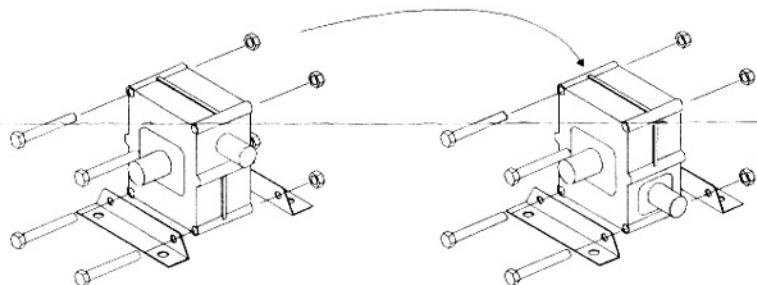
### INSTALLATION:

Morse ED/GED Series wormgear reducers and gearmotors are factory filled with lubricant for maximum performance under a wide range of operating conditions. The unit may be installed in any mounting position without relocating fill or drain plugs.

These reducers offer universal mounting capability with a simple bolt/bracket design.

### ▲WARNING

Failure to observe safety precautions could cause personal injury or equipment damage.



WORM ON TOP

WORM ON BOTTOM

Stock ED/GED Units are shipped in worm top mounting position. To convert units to other mounting positions, simply remove the mounting capscrews and nuts and reposition the mounting brackets to the desired location.

**Note:** Always replace all mounting capscrews and nuts before operating unit.

During installation, proper care should be taken to align couplings, sprockets, sheaves, and external gearing. Misaligned couplings can cause excessive loads on reducer shafts and bearings. **▲WARNING** Locate sprockets, sheaves, gears, etc. as close to the reducer housing as possible to minimize overhung loads. Avoid interference fits on shaft accessories since bearings and gears could be damaged.

All components of the drive, including the prime mover, the reducer/gearmotor and the drive load should be securely fastened in place after proper alignment and leveling of all elements.

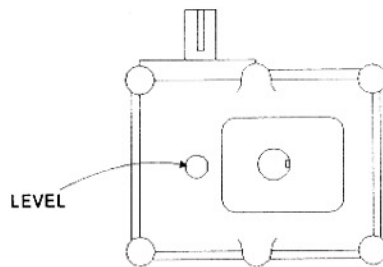
### LUBRICATION:

No oil change is necessary with Morse ED/GED Series reducers. Maintain proper oil level should leakage occur. Replace oil only when performing maintenance that requires gearbox disassembly.

Use wormgear lubricant.

Approximate oil capacities and proper oil level are shown below.

MODEL #	CAPACITY (oz)
13	7
15	9
18	12
20	18
25	32



Oil Level-In This Position Only

### ▲WARNING

Disconnect all power while adjusting units

## MAINTENANCE

Morse ED/GED series wormgear reducers/gearmotors should be inspected regularly for evidence of oil leakage, noise, or vibration to ensure maximum performance and life.

**OIL LEAKAGE** - Check housing bolts and tighten if necessary. Replace oil seals if required.

**OIL TEMPERATURE** - Check reducer temperature for undue rise above levels normally encountered and not accountable for by a rise in ambient. Low or high oil levels and abnormal loading are possible sources.

**SOUND LEVEL AND VIBRATION** - A change in sound level or excessive vibration can indicate low oil level, abnormal loading or worm elements.

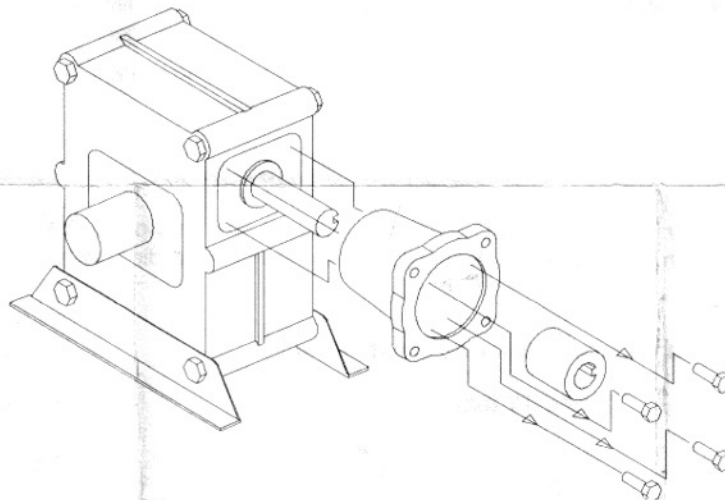
**DIRT ACCUMULATION** - Excessive accumulation of dirt or grease will affect the proper cooling of the unit.

## CONVERSION OF C-FACE REDUCER TO A UNIVERSAL

A Morse GED Reducer can be used as a universal by completing the following steps:

1. Slip motor coupling off reducer input worm.
2. Remove the motor adapter (held by four (4) socket head capscrews).
3. Press the oil seal into the reducer housing until it seats against snap ring.
4. Apply sealastic to the appropriate size setscrews and install into the four (4) tapped holes normally used to retain the motor adapter.

<u>FRAME SIZE</u>	<u>SOCKET HEAD SETSCREW SIZE</u>
25	3/8 - 16 X 1/2" Length
20, 18, 15	5/16 - 18 X 1/2" Length



REDUCER PARTS LIST  
25GED

**Morse. McGILL SEALMASTER.**

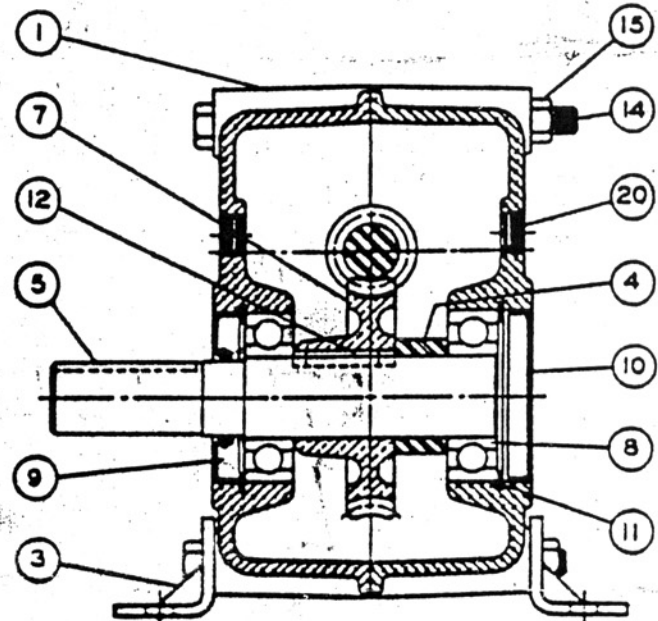
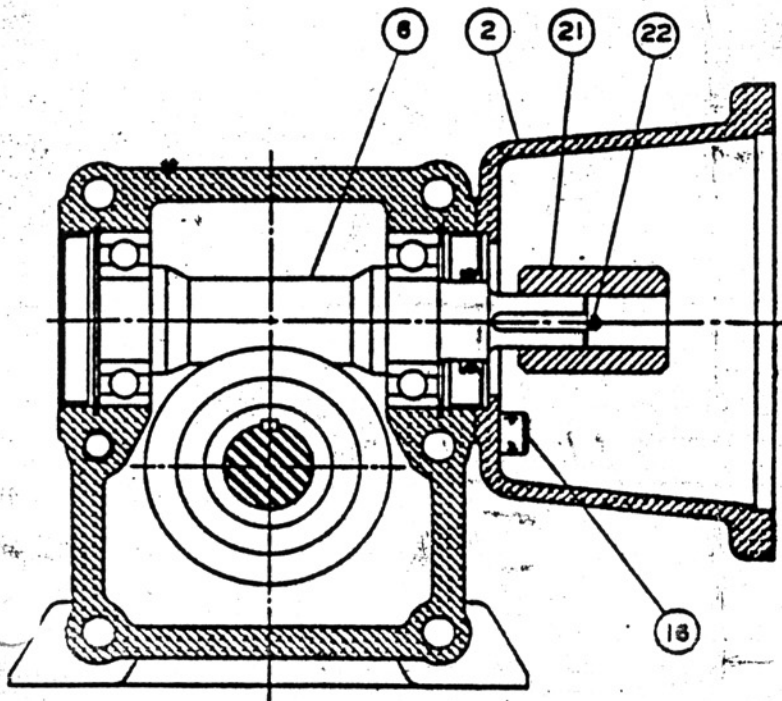


EMERSON POWER TRANSMISSION CORP.  
620 SOUTH AURORA STREET  
ITHACA NY 14850

FORM

5016-109

February, 1986



\*\*\*\* UNIT:25GED \*\*\*\*

AB-281

NO	NAME OF PART	PART NO	QTY
1	HOUSING SUB-ASSEMBLY	DL12028	1
2	MTR ADPTR 56C 145TC		
	4-1/2 RABBET	DL12044	1
	MTR ADPTR 182TC		
	8-1/2 RABBET	DL12415	1
3	MOUNTING BRACKET	DL12052	2
4	GEAR SPACER	DL12079	1
5	OUTPUT SPACE	DL12087	1
6	WORM	DL12095	1
		DL12108	7.5
		DL12116	10
		DL12124	15
		DL12132	20
		DL12141	25
		DL12159	30
		DL12167	40
		DL12175	50
		DL12183	60
7	WORM GEAR	DL12212	1
		DL12221	7.5
		DL12239	10
		DL12247	15
		DL12255	20

NO	NAME OF PART	PART NO	QTY
7	WORM GEAR	DL12263	1
		DL12271	30
		DL12280	40
		DL12298	50
		DL12301	60
8	BEARING 207KDD	FF30169	4
9	OIL SEAL 472658	FG01318	2
10	BORE PLUG	FG16034	2
11	SNAP RING	FI12385	4
12	KEY GEAR	PH01360	1
13	CAP SCREW	FJ36726	2
14	CAP SCREW	FJ46799	4
15	HEX NUT 1/2-13	FJ91143	4
16	CAP SCREW-MTR ADPTR	FJ35643	4
20	OIL PLUG	FK05066	2
21	COUPLING 5/8 TO 7/8	FA05073	1
	7/8 TO 7/8	FA05090	
	7/8 TO 1-1/8	FA05145	
22	ROLL PIN	FI15543	1
	ROLL PIN	FI15551	
23	NAME PLATE	FN01113	1
24	DOWEL PIN	FI15050	1
25	BOSTON FEET	DL12431	OPT

AT-2350