

INSTRUCTION MANUAL

RTC-420M2 Manual Tank Dolly



Renaldo Sales & Service, Inc.



Read and understand all of the instructions and safety information in this manual before operating or servicing this dolly. Failure to observe this precaution may result in injury or property damage.

Table of Contents

Description	1
Safety Information.....	1
Purpose of this Manual	2
Specifications.....	2
Operation	3
Product Support.....	3
RTC420M2 Options	4
Parts Diagram - RTC-420M2.	6
Parts List - RTC420M2	7
Parts List - Locking Latch Assembly ..	8
Limited Warranty	9

Description

The primary function of the RTC420M2 Manual Tank Dolly is to safely carry a full 420 lb. (100 gal) D.O.T. propane cylinder. It also has the ability to handle 100 and 200 pound cylinders, as well as 55 and 35 gallon drums. The RTC420M2 has a maximum carrying capacity of 900 lbs.

Recent changes adopted by the Uniform Fire Prevention and Building Code Council, in the United States regarding cylinder re-qualification make this dolly even more important to your business. It offers an effective platform from which technicians are able to inspect, recover, or replace D.O.T. cylinders in the field.

Safety Alert Symbol



This symbol is used to call your attention to hazards or unsafe practices which could result in an injury or property damage. The signal word, defined below indicates the severity of the hazard. The

message after the signal word provides information for preventing or avoiding the hazard.

DANGER

Immediate hazards which, if not avoided, **WILL** result in severe injury or death.

CAUTION

Hazards or unsafe practices which, if not avoided, **MAY** result in injury or property damage.

Employees who work with Dollies shall inspect the equipment before use to verify it is in proper working condition and shall be familiar with the equipment's proper operation.

When moving Dollies through a facility, the user shall contact facility personnel to discuss floor loading practices and procedures.

When connecting to anything other than a 420 lb. cylinder, we recommend that a second person assist. For one person operation, the weight of a single cylinder being moved must be greater than the weight of the cart (95 lbs.).

It is NOT recommended that the operator of this dolly attempt to traverse steep grades in either the forward or reverse direction, unassisted. Always remember that forward momentum, gravity, the weight of the cylinder, and material shifting inside the cylinder are working against you.

THIS UNIT IS NOT EQUIPPED WITH A BRAKE!

Purpose of this Manual

This manual is intended to familiarize all personnel with the safe operation of the RTC420M2 Manual Tank Dolly. Keep this manual available to all personnel.

The Descriptions and specification contained in this information are subject to change. Renaldo Sales & Service, Inc. reserves the right to change the design of our equipment at any time as part of our normal product improvement process. Upgrades and enhancements may have taken place after this manual was printed. For the latest technical information and specifications on your RTC402M2 Dolly, please contact us at (800) 424-5564.

Replacement manuals are available upon request at no charge at www.renaldo.org.

Specifications

Model: RTC420M2

- **Weight:** 155 LB (70 kg)
- **Capacity, weight:** 900 LB (408 kg)
- **Capacity, cylinders:** 1, Full 420 lb. D.O.T. Propane Cylinder, or one full 200 lb. Propane Cylinder, or one full 55 gallon Drum, or one full 120 Gallon ASME Tank**, or two 100 Lb. cylinders**, OR one 50 Gallon D.O.T. Cylinder**
- **Dimensions:** 40" (h) x 39" (w) x 64" (l); 102 (h) x 99 (w) x 163 (l) cm
- **Construction:** Tubular steel
- **Tires:** (2) 16x650-8 2 Ply Rib 410-4 Ply Sawtooth Castor
- **Straps:** 2" x 10' Nylon with ratchet 1" x 2'6" Nylon w/ Hook
- **Color:** Black Powder Coating (no color options)
- **Assembly:** No Assembly Required
- **Warranty:** One year on all structural components.

**Adapter kits are required to transport the noted cylinders and tanks. Please see page 6.



Operation

Begin by rolling the dolly up to the cylinder you wish to move. Release the locking mechanism that holds the handlebars together, and raise the top set of handle bars to the vertical position.

Move the dolly adjacent to the tank, with the rubber bumper pads touching the tank.

Next, wrap the yellow 10,000 lb. nylon load bearing strap attached to the left side of the unit, around the tank and through the slot in the ratchet, located on the right side of the unit, and tighten. The combination of friction from the bumper pads and the tension of the strap will hold the cylinder on the unit.

Grip the handle bars in the vertical position and pull the handle with the tank attached down onto the bottom frame. Make sure the handle bars lock together.

Note: A cylinder should never come in contact with metal. Occasionally check the rubber pads and nylon straps for any wear, nicks, or abrasions.

Lubrication

Grease fittings are located on the wheel hubs and on the rear swivel castor. Use a standard grease gun and lubricant in these fittings once per month or every 40 hours usage. DO NOT over lubricate.

Product Support

Notify the manufacturer, Renaldo Sales & Service, Inc. immediately of any malfunction or failure. Return damaged parts to the manufacturer for inspection and Product Support Policy consideration. Use only genuine Renaldo replacement or repair parts. Use of another manufacturer's parts may void Product Warranty considerations.

FOR SERVICE AND REPLACEMENT
PARTS, OR NEW EQUIPMENT,
CONTACT:

RENALDO SALES & SERVICE, INC

1770 Milestrip Road
North Collins, NY 14111
(800)-424-5564
(716)-337-3760

www.renaldo.org

Email: info@renaldo.org

Options and Adapters

RTC120 - 120 Gallon ASME Tank Adapter



The RTC120 adapter is designed to carry a single 120 gallon, horizontal style propane storage tank. This kit includes the adapter, strap, ratchet modifications and installation and operating instructions. This is NOT capable of handling 250 gallon ASME tanks. This adapter makes the handling of these tanks a one or two man operation.



RTC2-100 - 100 Lb. Cylinder Adapter

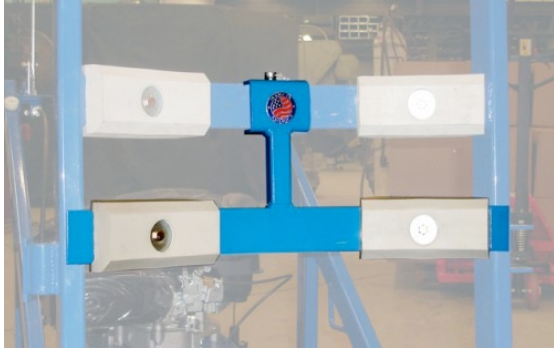


The RTC2-100 is a specially designed adapter to make it easier to transport two (2) 100 lb. propane cylinders. It mounts and un-mounts to the Tank Dolly in seconds by simply placing the attachment on the cross bars and inserting the pin. There is no assembly required and it is guaranteed against any structural defects for 1 year.



Options and Adapters Cont.

RTC50 - 50 Gallon D.O.T. Cylinder Adapter



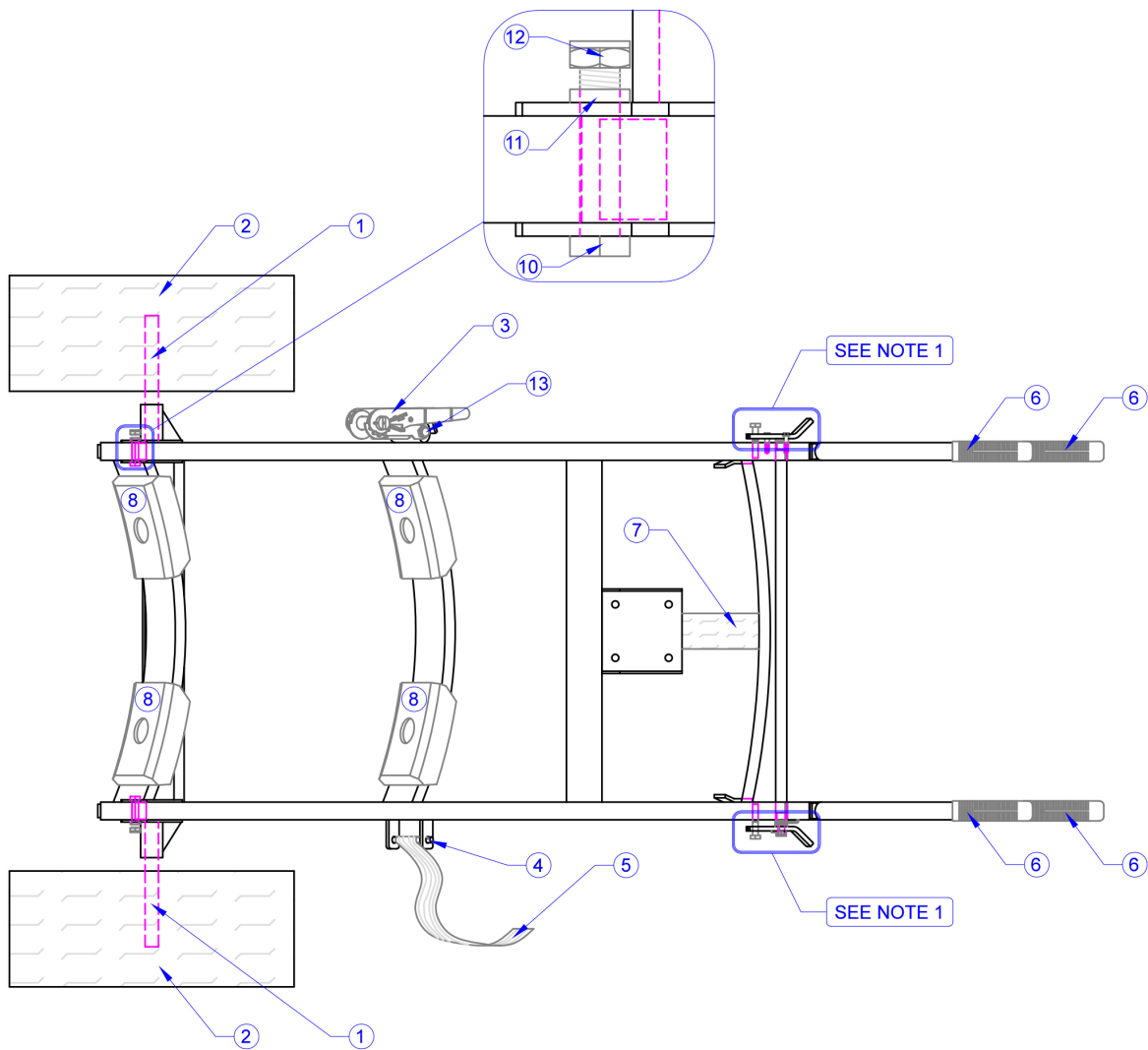
The RTC50 allows for the Tank Dolly to handle the squat style. 50 gallon ASME or D.O.T. cylinder. It's a one operation to install in seconds. Designed to safely transport the cylinder while attached to the tank dolly to your job location. Single strap design and the additional rubber grip bumpers secures the tank to the dolly.

Please Note: All adapter kits for the RTC420M2 are sold separately. Manuals and installation instructions sent with kit.

For more information or to order an adapter for your dolly, please contact Renaldo Sales & Service, Inc.

RTC-420M2 - Diagram

Parts List: See Next Page





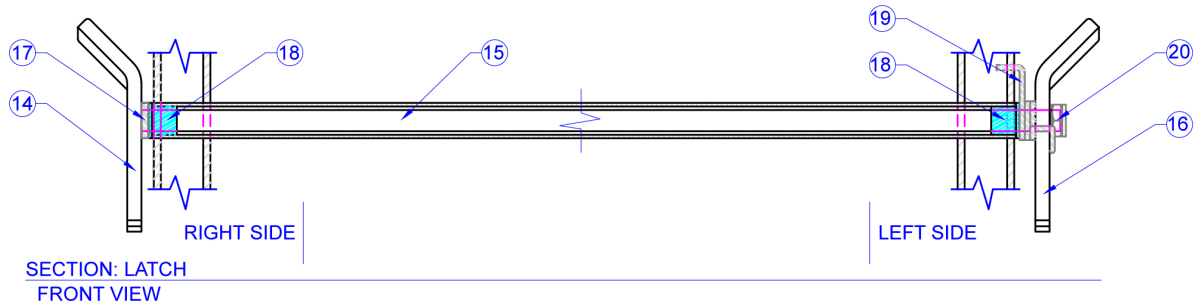
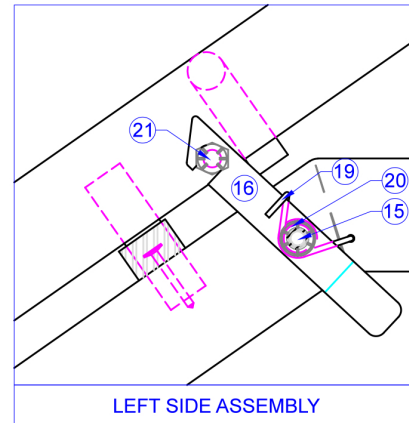
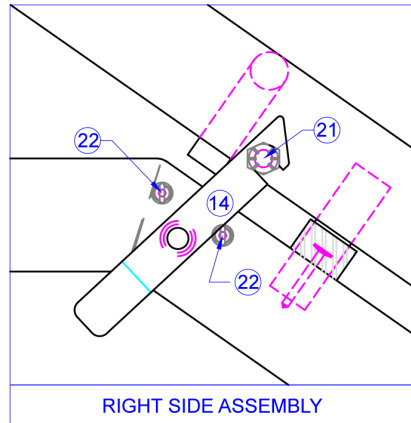
Parts List - RTC-420M2

NO.	QTY	PART	DESCRIPTION
1	2	HEX 08-25	Axles - 3/4-10NC X 8 Hex Head Bolt GR 8 ZP
2	2	658DC4X-R1I	16 X 650-8 2 Ply Rib Tire w/Rim and 3/4 Ball Bearing X 4" (RTC420M & M2)
3	1	C-4 RTC	Modified 804 Ratchet w/ C-3 Pad For All RTC420 Tank Dollies
4	1	SNPP0310275OZ	5/16" X 2 3/4" Lynch/Snap Pin, Tank Strap Anchor Pin
5	1	40Y1000SP	2" X 10' Strap w/Sewn Loop One End, No Pad
6	4	354	Finger Molded, Ribbed Handle Grip
7	1	354FS4-1	410-4 Ply Sawtooth Implement Tire, WHL & PL Swivel Caster
8	4	AA-5 RTC	Cross Brace Tank Bumper, Includes Mounting Fasteners
9	2	B-16 RTC	Top Frame Rest Bumpers W/ Rivet (Not Shown)
10	2	HEX 03-08	3/8-16 x 1-3/4 Hex Head Bolt, GR 8, Zinc Plated
11	2	HEX 03-38	3/8 SAE Flat Washer
12	2	HEX 03-33N	3/8-16 Nylock Half Nut, GR 8, Zinc Plated
13	1	30-52	1/2 X 4-1/2 Hitch Pin for Ratchet Assembly

Parts List - Locking Latch Assembly

E-2 RTC - Complete Locking Assembly w/ Spring, Rod and Misc. Hardware

NO.	QTY	PART	DESCRIPTION
14	1	E-2A RTC	Right Locking Latch & Rod Assembly, Threaded One End
15	1	E-2B RTC	Rod Only for Locking Latch Assembly, Threaded One End
16	1	E-1 RTC	Left Locking Latch Only
17	1	HEX 03-38	3/8" SAE Flat Washer
18	2	NF68-4	Nylon Bushing 1/2 OD x 3/8 ID x 1/2 LG
19	1	RTC790	Pivot Lock Torsion Spring for Locking Latch
20	1	HEX 03-35F	3/8-24NF Nylock Half Nut
21	2	A-14 RTC	RTC420UN Locking Latch Bolt
22	2	B-24 RTC	Locking Latch Bushing





Limited Warranty

Effective January 1, 2025

This warranty supersedes all previous RENALDO warranties and is exclusive with no other guarantees or warranties expressed or implied.

LIMITED WARRANTY - Subject to the terms and conditions hereof, RENALDO'S SALES & SERVICE, INC., NORTH COLLINS, NEW YORK, warrants to the purchaser that all new and unused equipment furnished by Renaldo is free from defect in workmanship and material as of the time and place of delivery by Renaldo or its dealer for a period of one (1) year. NO WARRANTY is made by Renaldo with respect to blowers, hydraulic pumps, engines, transmission, trade accessories or other items manufactured by others. Such blowers, hydraulic pumps, engines, transmissions, trade accessories and other items are sold subject to the warranties of their respective manufacturers, if any. Renaldo's warranty does not apply to components having normal useful life of less than one (1) year, such as propane stove burners, propane torches, hoses, chain, sprockets, belts, blades, tires and straps where failure does not result from defect in workmanship or material.

In the case of Renaldo's breach of warranty or any other duty with respect to the quality of any goods, the exclusive remedies therefore shall be, at Renaldo's option; (1) repair or (2) replacement or, where authorized in writing by Renaldo in appropriate cases, (3) the reasonable cost of repair or replacement at an authorized Renaldo representative or, (4) payment of or credit for the purchase price (less reasonable depreciation based upon actual use) upon return of the products at customer's risk and expense. Renaldo's option of repair or replacement will be F.O.B. factory at North Collins, New York, or F.O.B. at a Renaldo authorized service facility, therefore, no compensation for transportation cost of any kind will be allowed. Upon receipt of notice or apparent defect or failure, Renaldo shall instruct the claimant on the warranty claim procedures to be followed.

Any expressed warranty not provided herein and any implied warranty, guarantee or representation as to performance, and any remedy for breach of contract which, but for this provision, might arise by implication, operation of law, custom of trade or course of dealing, including any implied warranty of merchantability or of fitness for particular purpose with respect to any and all equipment furnished by Renaldo is excluded and disclaimed by Renaldo.

Except as expressly provided by Renaldo in writing, Renaldo products intended for ultimate purchase by commercial, industrial and agricultural users and for operation by persons trained and experienced in the use and maintenance of equipment manufactured by Renaldo's and not for consumers or consumer use. Renaldo's warranties do not extend to, and no reseller is authorized to extend Renaldo's warranties to any other consumer.